

LANGE AUCTIONS

Machine & Equipment Auction

2450 S. Leonine Wichita, KS.

Sep. 30 at 10 a.m.

*Subject to prior sale in entirety by
September 23, 2009*



Online Preview at www.langeauctions.net

Directions: From Meridian and Pawnee, head West on Pawnee .6 miles to Leonine. Turn South to property.

More property on reverse side.

Mills: Haas 2000 HS-1 RP, Haas 1995 HS-1 RP, Haas 1998 HS-1, Haas 1997 VF-OE, Haas Super VF-4

Support Equipment: 2008 Alup screw compressor, upright 120 gal. compressor, upright band saw, horizontal band saw, two downdraft deburr tables, assorted deburring equipment, squeeze rivet tool, 3000 lb. fork lift

Cutting tools: tool holders 40-taper, collets, end mills, boring bars, wheel cutters, face mills, drills, reamers, taps



Don Burford,
Associate Broker/Auctioneer
Terry Hughes: Auctioneer
Mark Wedman, Agent
Seller:

For More Pictures & Information see:
www.langeauctions.net
529-3100 or 800-525-8160
Email: markw@jefflangere.com
For more information: 316.250.0088



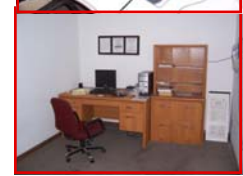
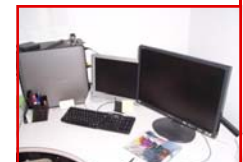
Shop Fixtures: Mylar table, 3 work tables, shop desks, 15 assorted sized storage racks, large rollaway tool box (loaded)



Inspection: Brown & Sharpe CMM, granite surface plate, digital height gauge, calipers, micrometers, gauge pins & blocks, radius gauges, thread micrometer, bore gauges



Office: 7 desks of assorted styles, 7 computers with monitors, 2 seats MasterCam x3, 2 seats Jobboss job control, filing cabinets lateral and upright, many chairs, 2 refrigerators



GENERAL AUCTION TERMS:

YOUR BIDDING IS NOT CONDITIONAL UPON FINANCING.

AGENCY: Jeff Lange Real Estate is acting as Agents of the Seller and all licensees employed by or associated with Auctioneer/Broker represent the Seller in the Sale of this property.

Property is being sold as-is, where is. Buyer is responsible for all inspections. Announcements made by the auctioneer during the time of the auction will take precedence over any previously printed material or any other oral statements made.

Not Responsible for Accidents.

If you would like to receive future auction brochures by e-mail, please email Alyce at alycen@jefflangere.com